



# Shaping the effortless laundry

Line 6000 Dryers



Electrolux Professional Line 6000

# You talk...

Help me run a first-rate laundry where I get the absolute best results while reducing effort and costs. I need my team to get more done faster, thanks to an ergonomic design that reduces physical strain and a clear, attractive interface. Give me robust equipment that will save me money thanks to lower life cycle costs, year after year.



# ...we listen

**Line 6000 will save you money, anticipate your needs, and exceed your expectations.** Our intensive research and cutting-edge product development have led to an ergonomic line of dryers that ensures effortless operation and exceptional savings. We connect you to the cloud and make your laundry work for you. Come with us and discover how great your business can be.



## Innovation is the driver of great performance



### **Easier, healthier, safer**

Certified ergonomic design with a human-centered approach for an outstanding user experience.



### **Real-time solutions**

Monitor your equipment's status and performance from anywhere and take action to improve your business.



### **Long-term savings**

Innovative features to save money and time, and embrace a sustainable lifestyle.



### **Outstanding productivity**

Dry more laundry in less time.



Easier,  
healthier,  
safer

Our priority is to create solutions designed precisely for the people who use them, day after day. **Exceptional results for minimal effort:** it's as simple as that.

# Our design is all about you

Anyone who dries laundry day in and day out knows that repetitive acts like reaching and bending can be stress points that make the job more difficult and reduce productivity. By focusing on the physical and cognitive interaction between user and equipment, **we make each of these motions more comfortable for an all-around effortless experience.**

## Certified comfort

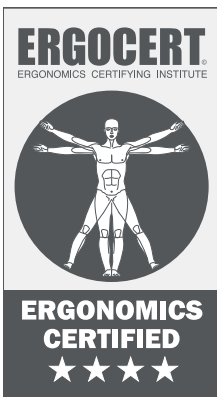
The user interface has passed third party external testing and the new range is **certified to international standards of ergonomics** and human-centered design.

Our dryers have earned **the prestigious 4-star rating for ergonomics**. This means they have been user-tested to make sure your operators will feel less tension and strain, so they—and your business—can thrive.

## Pioneers in usability

Ergonomic interventions can reduce work-related musculoskeletal disorders (WMSDs) by **59%**, with an average decrease of **75%** in sick days and a **25%** increase in productivity.

Washington State  
Department of Labor & Industries



## Experience 4-stars



**Compliance with ergonomic principles**  
Designed with you in mind



**Evidence-based anthropometric & biomechanical compliance**  
Reduced risk of injury



**Evidence-based usability**  
The culmination of years of professional studies and expertise



**Human-centered design**  
To make laundry simple and stress-free

# Work comfortably, dry more in less space



## Space-saving

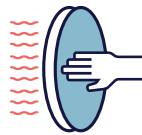
The new range **takes less than one square meter** of floor space, regardless of heating system (gas, electric, steam or heat pump).

## The door that makes the difference:



### A better grip

**Open and shut the door smoothly** thanks to the handle design and easy-close magnetic door.



### Safer for users

The insulated glass door stays cool on the outside so there is **no risk of burned fingers or hands**. It also keeps the heat inside, so the room temperature is not affected.



### Ideal height

The door is positioned at the most ergonomically **suitable height**. This makes a real difference for loading and unloading.



### Sturdy and reliable

Because the door is **built to last**, it will optimize performance throughout the life of the dryer.



Watch the video and find out more!



## A filter drawer right where you need it

### Maximum comfort

The horizontal filter drawer is positioned for **easy access and cleaning** without the need to bend down. Human-centered design down to the smallest details **takes the stress out of a physically demanding job**.

# Big benefits in a smaller size

If you put a premium on space, we have the solution for you. The TD6-7 dryer is a **full-featured professional model** in a more compact size that **stacks seamlessly** with our smaller washer. Use it alone or as part of a tower: the new Compass Pro (R) interface can be placed at the top or the bottom of the dryer to keep it in easy reach.

With its smaller footprint, this dryer fits into challenging spaces or leaves you room to install more equipment, while still providing optimal results and unbeatable productivity.

Dry **70** kg per day in  
less than **0.4 m<sup>2</sup>**!

## Stackable!

Here you see the TD6-7 with the control panel at the top. Stacking over a washer or another dryer? No problem: the panel can be moved to the bottom.



## Smart interface



The Compass Pro<sup>®</sup> microprocessor works through a large screen where you can select your program easily in your choice of language. Quick-select buttons for frequently used programs and intuitive new icons for normal/low temperature, delicates, and other options.



Low Temp  
Sensitive



Normal Temp  
Extra Dry



Wool



Low Temp  
Down



Long-term  
savings

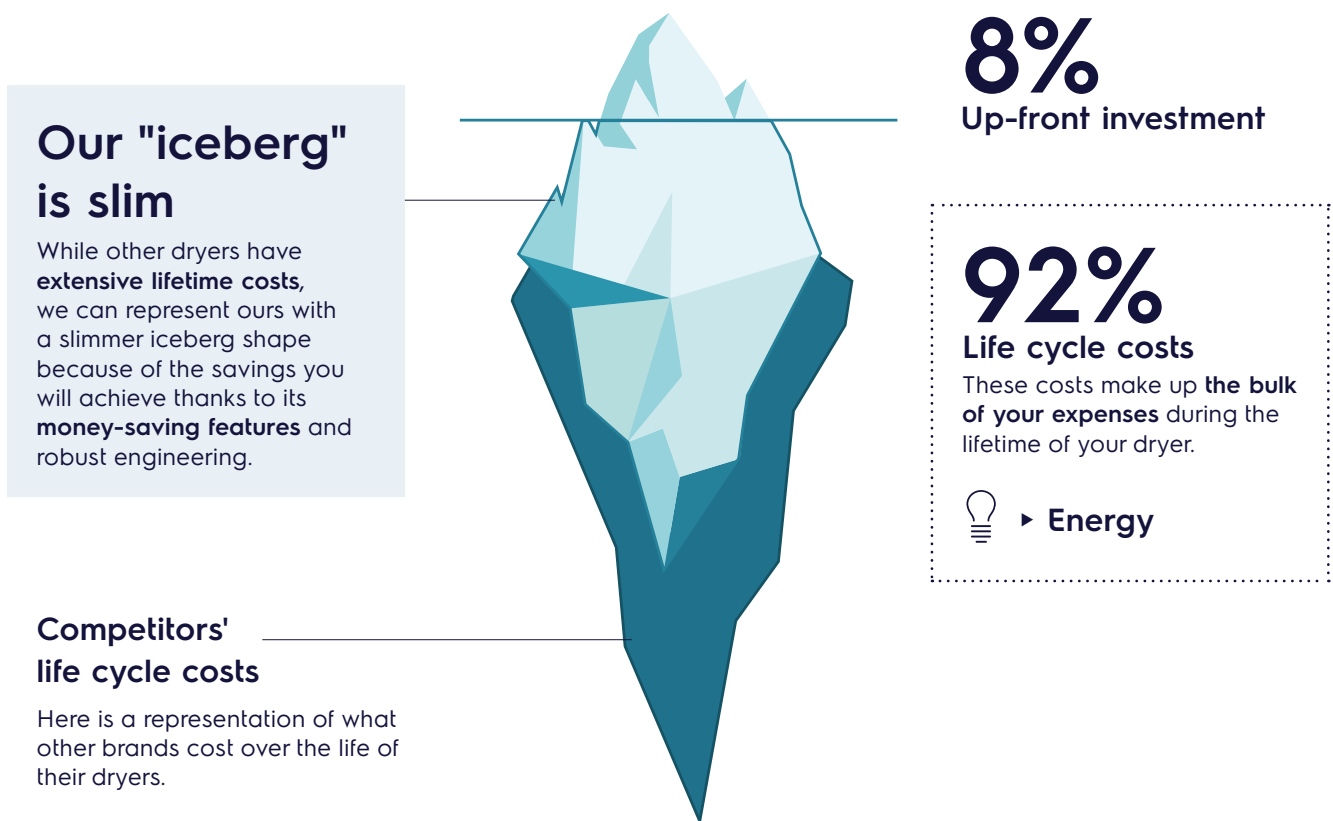


You know how  
expensive it can be to  
run a laundry business.  
Let us **keep your costs  
down** so your business  
can reach new heights.



# Look under the surface to see how much you save

When considering the cost of an investment, the up-front expense is just the tip of the iceberg. Operating costs accumulate, year after year, and make up the largest share of your expense. Over the long term, **our dryers will cost you much less and make your investment more profitable.**



## From intelligence to Excellence

By considering our customers' needs, ideas and suggestions, we create intelligent features that make our customers' work lives easier and more profitable.

# We make breakthroughs to save you money

Line 6000 is several laps ahead of other dryers in terms of energy savings and speed. This is good for the world around us and good for your bottom line. By investing heavily in **advanced technology**, we have achieved **outstanding drying times** while also reducing the dryer's life cycle costs.

## Heat Pump dryers: where sustainability meets performance

Heat Pump dryers have always been good at saving energy. Ours takes it a step further and **saves you more than 60% compared to traditional dryers!**

In the past, the tradeoff for energy savings through heat pump technology was slower drying times. Electrolux has **changed the rules when it comes to Heat Pump dryers and performance.**

Save more than  
**60%**  
on energy





### Best result with all fabrics

From delicate silk to heavy cotton: manually **adjusts the drum speed to control the mechanical action**. Garments will move correctly in the drum for the fastest drying.

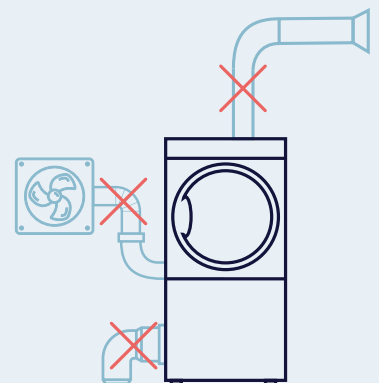
## Efficient in every way

The Heat Pump line is suitable for installation almost anywhere thanks to a small footprint and **plug & play capabilities**. This saves money on installation costs because there is no need for exhaust, ducting, ventilation or a water cooling system.

### No need for:

- exhaust
- ventilation
- water cooling system

## Install it anywhere and save money!



# More exciting news in dryer technology



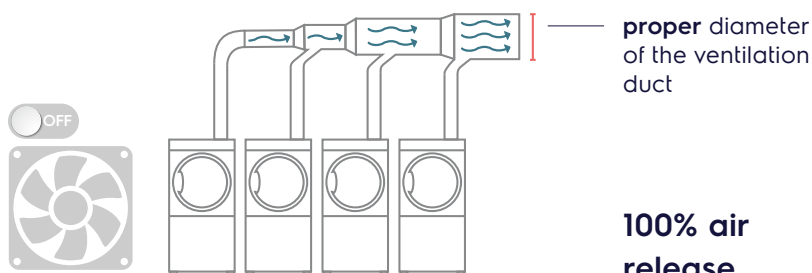
## High performance, less noise

The **Adaptive Fan** control **adjusts the fan speed automatically to save energy, reduce drying time, and provide an even drying result.** It can also be used to reduce the noise level when needed, and makes it easier to install dryers in a challenging environment. Adaptive Fan turns on automatically, for example if filters are clogged or if ventilation ducts are too small. It also makes the fan last longer, to save you time and money.

\*The Adaptive Fan control is only available with the electric version.

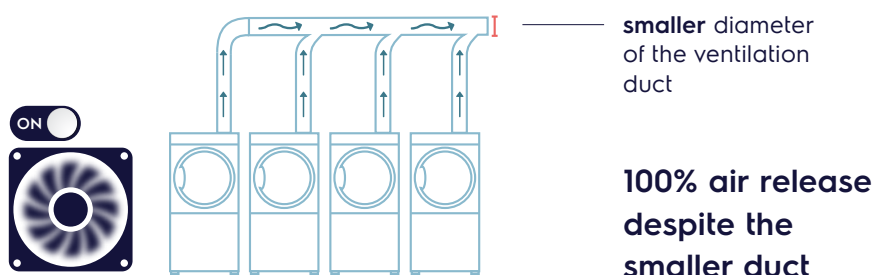
## Adaptive Fan control can also be important when you have more than one dryer in a series:

**If your ventilation duct grows wider and the filters are clean**



**If your ventilation duct has a constant diameter:**

Adaptive Fan will compensate by adjusting the fan speed of each dryer, to **keep air flowing efficiently.**





## For all of our dryers

Moisture  
Balance

### Dry not overdry

**Moisture Balance** measures the exact moisture level throughout the drying process. Protects garments and saves energy by stopping as soon as they are dry, or at the moisture level you set.



Watch  
the video  
and find out  
more!





## Outstanding productivity

The laundry business is hugely time-intensive. Faster equipment means you can handle more loads of laundry in a day: **the easiest way to make your business more productive.**

# Dry more. In less time

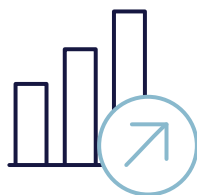
Increased output per dryer is already something to celebrate. Combine that with great results, and customers will keep coming back.

With Line 6000, there is no such thing as compromise, and you can finally **have it all**.

Maximum productivity  
and consistently ideal  
results, time after time.  
Turn the page  
to find out more.



Satisfied  
customers



Greater  
profits



# The most productive dryer you can buy

There is no other dryer that can **handle the volumes** ours does in the same amount of time. You will be amazed by how fast you can move loads of laundry and how much your business can accomplish.



**16** KG in **42** MIN\*

**Shortest drying time on the market**

That's a performance like no other in the industry!

\*At rated capacity, 100% cotton load at 50% initial moisture dried to 0%.

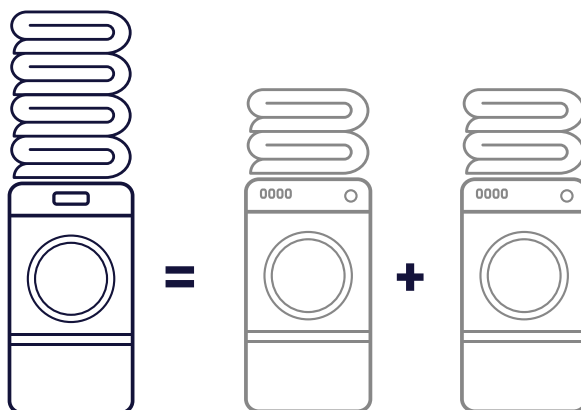
## Dry more garments in less time

The smaller dryer takes 44 minutes\* to dry 6 kg of garments. Choose the larger model and you will be even more productive!

\*At rated capacity, 100% cotton load at 50% initial moisture dried to 0%.

## Did you know?

To dry this load in the same amount of time, **with other brands you would need two dryers instead of one!**









Real-time  
solutions

Elect  
O

A world of digital solutions that **simplify your work and help your business develop.** Benefit from a growing range of services, designed just for you.

# The OnE effect

A unique partner. A world of benefits.

Electrolux **OnE** is your digital partner that helps you to optimize your laundry operation. **OnE** guides you through your day enabling you to make the right decision every time. Whether you are an owner, manager, operator, or technician, **OnE** helps you to get top performance from your Electrolux solutions. This will maximize your revenue and accelerate your return on investment.

rolux  
nE



## Improve your work-life

Electrolux **OnE** gives you remote control over your operations. This saves you time to focus on the essentials of your business.



## Maximize profit

Electrolux **OnE** helps you reduce consumption to a minimum and optimize the efficiency of your business. This in turn will maximize your profits.



## Boost your performance

Electrolux **OnE** gives you the insight to better organize your production flow, and so improve your productivity and output quality and meet the highest quality standards.



## Increase uptime of your equipment

Electrolux **OnE** helps you plan maintenance at just the right time, to ensure maximum uptime while reducing your costs for unexpected breakdowns.



# Essentia Teamed to serve you. Anytime, anywhere

Essentia is **the heart of superior Customer Care**, a dedicated service that ensures your competitive advantage. Provides you with the support you need and takes care of your processes with a **reliable service network**, a range of tailor-made exclusive services and innovative technology.

You can count on more than **2,200 authorized service partners**, **10,000 service engineers** in more than **149 countries**, and over **170,000 managed spare parts**.

## Service network, always available

We stand ready and committed to support you with a **unique service network** that makes **your work-life easier**.

## Keep your equipment performing

Undertaking correct maintenance in **accordance with Electrolux Manuals** and recommendations is essential to avoid unexpected issues. **Electrolux Customer Care** offers a number of **tailor-made service packages**. For more information contact your preferred **Electrolux Authorized Service Partner**.

## Service agreements you can trust

You can choose from **flexible tailor-made service packages**, according to your business needs, offering a variety of maintenance and support services.



Watch  
the video  
and find out  
more!



# Accessories & Consumables: your added value

Simplify your work and help your equipment last longer with **original Accessories & Consumables**. Dispatched quickly after rigorous testing by Electrolux Professional experts to ensure **best-in-class performance, profitability and user safety**.

## Keep your laundry moving!

A wide range of accessories allows efficiency and best ergonomics

- ▶ The right trolleys and racks **facilitate the handling** of the laundry and help to prevent repetitive strain injuries.
- ▶ **Ergonomic laundry trolleys and racks** are suitable for commercial laundries, hospitals, nursing homes, hotels, spas, etc. Their design ensures that the trolley will come close to the equipment so that the laundry does not end up on the floor.
- ▶ Carts can be used for **the storage and in-house transport** of lightweight items such as shirts and other garments, terry cloth, bed linen and blankets.



### Code

0W1XFY

0W1Y2F

0W1Y2C

### Description

Canvas Trolley RV-74 - 200 lt

Stainless Steel Trolley BV-220 / BV-131lt

Bulk Transport Cart HV-52

### Part number

0W1XX5 432730555

0W1Y2F 432730562

0W1Y2C 432730558



Watch the video and find out more!



# Range overview

	Electric	Gas	Heat Pump
Drum volume (l)	135	135	135
Dry weight capacity (kg/lb)	7/15	7/15	7/15
Width (mm-in)	600	600	600
Depth (mm-in)	845	845	845
Height (mm-in)	1050	1050	1050
Heat pump module	-	-	●
Horizontal filter	●	●	●
Drum Speed control	-	-	-
Adaptive Fan control	-	-	-
Moisture Balance	○	○	●
Stainless steel drum / front / door / side plates	○	○	○
Galvanized steel drum / front / door / side plates	●	●	●
Compass Pro extended	●	●	●
Reversing drum	●	●	●
lagoon® Advanced Care	○	○	○
Stackable	●	●	●



TD6-7

	Electric	Gas	Heat Pump	Steam
Drum volume (l)	255	255	255	255
Dry weight capacity (kg/lb)	14/30	14/30	14/30	14/30
Width (mm-in)	793	793	793	793
Depth (mm-in)	965	965	965	965
Height (mm-in)	1771	1771	1771	1771
Heat pump module	-	-	●	-
Horizontal filter	●	●	●	●
Drum Speed control	○	○	○	○
Adaptive Fan control	○	-	-	-
Moisture Balance	○	○	●	○
Stainless steel drum / front / door / side plates	○	○	○	○
Galvanized steel drum / front / door / side plates	●	●	●	●
Compass Pro extended	●	●	●	●
Reversing drum	●	●	●	●
lagoon® Advanced Care	○	○	○	○
Stackable	-	-	-	-



TD6-14

	Electric	Gas	Heat Pump	Steam
Drum volume (l)	360	360	360	360
Dry weight capacity (kg/lb)	20/44	20/44	20/44	20/44
Width (mm-in)	793	793	793	793
Depth (mm-in)	1202	1202	1202	1202
Height (mm-in)	1771	1771	1771	1771
Heat pump module	-	-	●	-
Horizontal filter	●	●	●	●
Drum Speed control	○	○	○	○
Adaptive Fan control	○	-	-	-
Moisture Balance	○	○	●	○
Stainless steel drum / front / door / side plates	○	○	○	○
Galvanized steel drum / front / door / side plates	●	●	●	●
Compass Pro extended	●	●	●	●
Reversing drum	●	●	●	●
lagoon® Advanced Care	○	○	○	○
Stackable	-	-	-	-



TD6-20

● STANDARD    ○ OPTIONAL    – NOT AVAILABLE



Discover the Electrolux Excellence  
and share more of our thinking at  
[www.electrolux.com/professional](http://www.electrolux.com/professional)

Follow us on    

Scan the cover to see Line 6000  
in **augmented reality**



The Company reserves the right to change specifications without notice. Pictures are not contractual.

## Excellence with the environment in mind

- ▶ All our factories are ISO 14001-certified
- ▶ All our solutions are designed for low consumption of water, detergents and harmful emissions
- ▶ In recent years over 70% of our product features have been updated with the environmental needs of our customers in mind
- ▶ Our technology is ROHS and REACH compliant and over 95% recyclable
- ▶ Our products are 100% quality tested by experts

