

Shaping the effortless laundry

Line 6000 Washers



You talk...

Help me run a first-rate laundry where I get the absolute best results while reducing effort and costs. I need my team to get more done faster, thanks to an ergonomic design that reduces physical strain and a clear, attractive interface. Give me robust equipment that will save me money thanks to lower life cycle costs, year after year.



...we listen

Line 6000 will save you money, anticipate your needs, and exceed your expectations. Our intensive research and cutting-edge product development have led to an ergonomic line of washers and dryers that ensures effortless operation and exceptional savings. We connect you to the cloud to give you remote control over your operations, at all time. Come with us and discover how great your business can be.



Innovation is the driver of great performance



Easier, healthier, safer

Certified ergonomic design with a human-centered approach for an outstanding user experience.



Real-time solutions

Monitor your equipment's status and performance from anywhere and take action to improve your business.



Long-term savings

Innovative features to save money and time, and embrace a sustainable lifestyle.



Outstanding productivity

Wash and dry more laundry in less time.



Easier,
healthier,
safer

Our priority is to create solutions designed precisely for the people who use them, day after day. **Exceptional results for minimal effort:** it's as simple as that.

Our design is all about you

Anyone who does laundry day in and day out knows that repetitive acts like reaching, bending and pouring can be stress points that make the job more difficult and reduce productivity. By focusing on the physical and cognitive interaction between user and equipment, **we make each of these motions more comfortable for an all-around effortless experience.**

Certified comfort

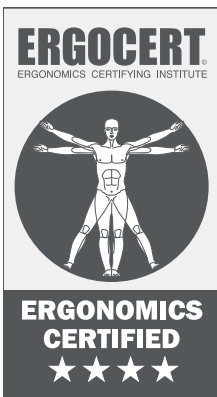
The user interface has passed third party external testing and the new range is **certified to international standards of ergonomics** and human-centered design.

Our washers have earned **the prestigious 4-star rating for ergonomics**. This means they have been user-tested to make sure your operators will feel less tension and strain, so they—and your business—can thrive.

Pioneers in usability

Ergonomic interventions can reduce work-related musculoskeletal disorders (WMSDs) by **59%**, with an average decrease of **75%** in sick days and a **25%** increase in productivity.

Washington State
Department of Labor & Industries



Experience 4-stars



Compliance with ergonomic principles
Designed with you in mind

Evidence-based anthropometric & biomechanical compliance
Reduced risk of injury

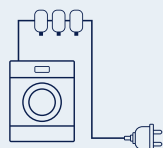
Evidence-based usability
The culmination of years of professional studies and expertise

Human-centered design
To make laundry simple and stress-free

Automatic or manual dosing. Either way, you win



Save time and chemicals with automatic dosing



Quick to install with all functionality embedded

Simply connect the washer to one or more pumps (for up to 15 types of chemicals) with a single cable. Detergent, softener and other chemicals will be automatically dosed according to the program and weight of the load. Simplicity is at your service.

Manual dosing has never been so simple



The right height

The front-mounted dispenser is positioned for easy access and tilts down when opened so **you can see each compartment clearly**.



Works with all types of chemicals

Suitable for **either powder or liquid detergent**, with a dedicated bleach compartment.



Easy to clean

Clear visibility and removable components make cleaning the dispenser simple and convenient.



User-friendly detergent dispenser

The dispenser has 6 color-coded compartments that **show you what to pour where**. Still not sure? Just follow the simple instructions on screen.



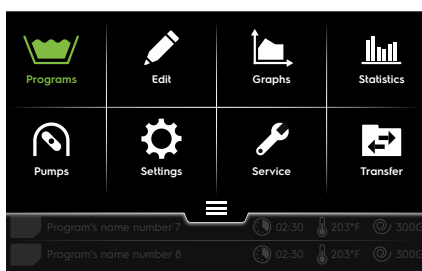
Watch the video and find out more!



Making every step intuitive and straightforward

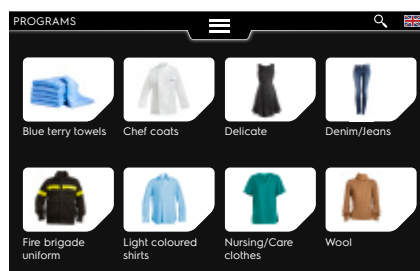


The new **ClarusVibe** control guarantees an intuitive experience and smooth interaction, providing a **smart and effortless way to manage the wash process**. Fully self-explanatory, it **saves time and boosts productivity** by making it easy to do the right thing on the first try for all users. ClarusVibe comes pre-set with all the programs you need, according to local regulations and the specifics of your business.



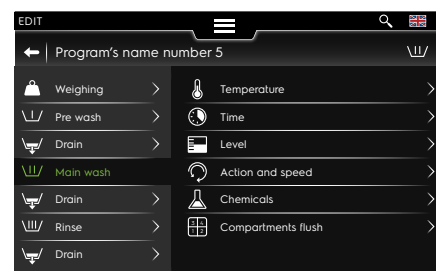
Full HD 7" color touchscreen

A clear and comprehensive layout gives users **full command of the process** without the need for searching and scrolling.



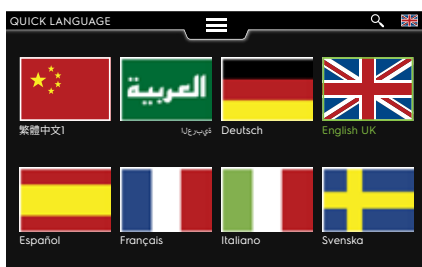
Intuitive & customizable

More productivity with an easy-to-use interface. You can even **set a customizable picture** for each of your selected programs.



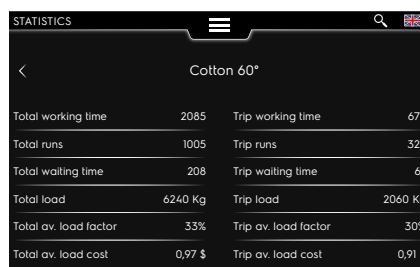
Fully editable programs

Easily set up **programs for anything**, from delicates to workwear and from surgical scrubs to plastic toys. You can update your library any time, directly on screen, without the need for a computer.



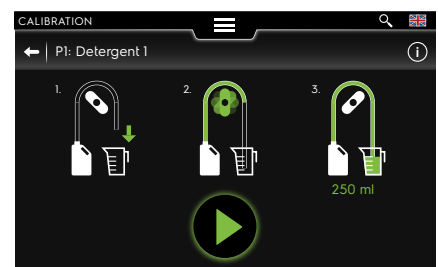
Multi-language

Compatible with all languages, even right-to-left scripts like Arabic. For international use or your multicultural team.



On-screen statistics

Easy, real-time access to a **wealth of information** that owners need to operate a successful business.



Easy dosing

Dosing pumps are fully controlled by ClarusVibe so you can be sure the **right amount of each chemical** is added at the right step of the process.

The Power of the Tower

Wash & dry **60** kg per day in less than 0.4 m²!

If you put a premium on space, we have the solution for you. On their own, the WH6-6 Washer and the TD6-7 Dryer are both **full-featured professional models** in a compact size. As a pair, the efficiencies multiply for unbeatable productivity and savings.

With their smaller footprint, **they fit into challenging spaces or leave you room to install more equipment**, while still providing optimal results.

Stackable!

They can be stacked to save space. In this case, the control panel on the dryer is moved to the bottom so it stays within easy reach.

Smart interface



The Compass Pro[®] microprocessor works through a large screen where you can select your program easily in your choice of language. Quick-select buttons for frequently used programs and intuitive new icons for normal/low temperature, delicates, and other options.



Low Temp Sensitive



Normal Temp Extra Dry



Wool



Low Temp Down

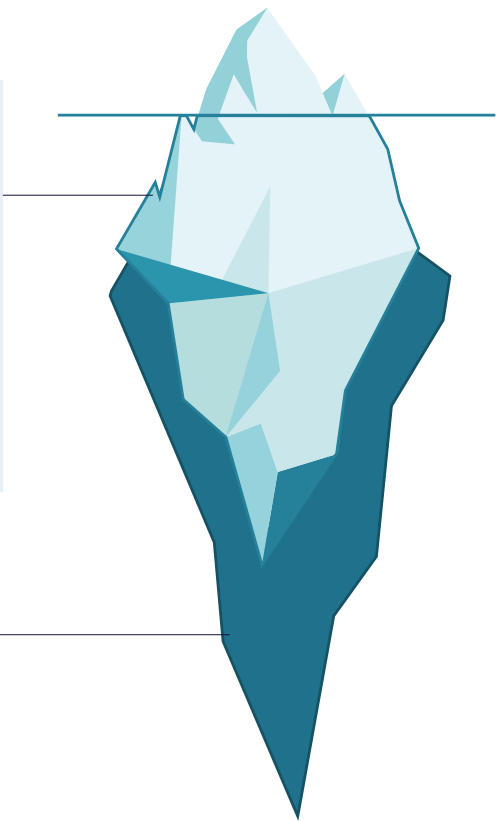


Look under the surface to see how much you save

When considering the cost of an investment, the up-front expense is just the tip of the iceberg. Operating costs accumulate, year after year, and make up the largest share of your expense. Over the long term, **our washers will cost you much less and make your investment more profitable.**

Our "iceberg" is slim

While other washers have **extensive lifetime costs**, we can represent ours with a slimmer iceberg shape because of the savings you will achieve thanks to its **money-saving features** and robust engineering.



15%
Up-front investment

85%
Life cycle costs

These costs make up **the bulk of your expenses** during the lifetime of your washer.

-   
- ▶ **Chemicals**
- ▶ **Energy**
- ▶ **Water**

Competitors' life cycle costs

Here is a representation of what other brands cost over the life of their washers.



From intelligence to Excellence

By considering our customers' needs, ideas and suggestions, we create smart solutions that make our customers' work lives easier and more profitable.

Not just clean: green and lean

Line 6000 is designed for the lowest possible **water, energy and detergent** consumption. With Automatic Savings or Integrated Savings, Intelligent Dosing and Power Balance technologies, we ensure minimum cost per load while helping you run an environmentally sustainable business.



Not a drop of water wasted

Automatic Savings weighs the linens and adjusts the water intake to the actual load. This **saves water, energy and money** at anything less than full loads.



without AS



with AS



Avoid overloading and underloading

With **Integrated Savings** measuring and showing the load in real time, you can avoid overloading and underloading, for optimized productivity. This way you **maximize profits, obtain optimal results, save water and energy** at less than full loads, and extend the lifetime of your washer.



Longer lifecycle



Precise detergent dosing

With the **Intelligent Dosing** feature, the precise amount of detergent will be added automatically according to the weight of the load.



without ID



with ID



Extraction sequence perfectly balanced

Power Balance translates to real-time unbalance monitoring and G factor adjustment throughout the extraction sequence, for **maximum dewatering** and lowest moisture retention to save you time and money in the drying process.



Maximum dewatering



Two easy options for automatic dosing

The Intelligent Dosing feature that automatically adds the right amount of chemicals works in perfect tandem with either of our dosing pump options. **JETSAVE and DOSAVE optimize the process** to eliminate waste and deliver consistently excellent results.

Sound complicated? Not at all. Your washer is ready to go with **two quick connection cables**: one for the power supply and one for dosing signals data, with no need for multiple cables or difficult wiring jobs.



JETSAVE option



DOSAVE option

The **JETSAVE option** uses venturi-based, water-powered pumps that require less maintenance because there are no moving parts or squeeze tubes to replace. Dosage is reliable and installation is sleek and tidy thanks to the built-in flush manifold.



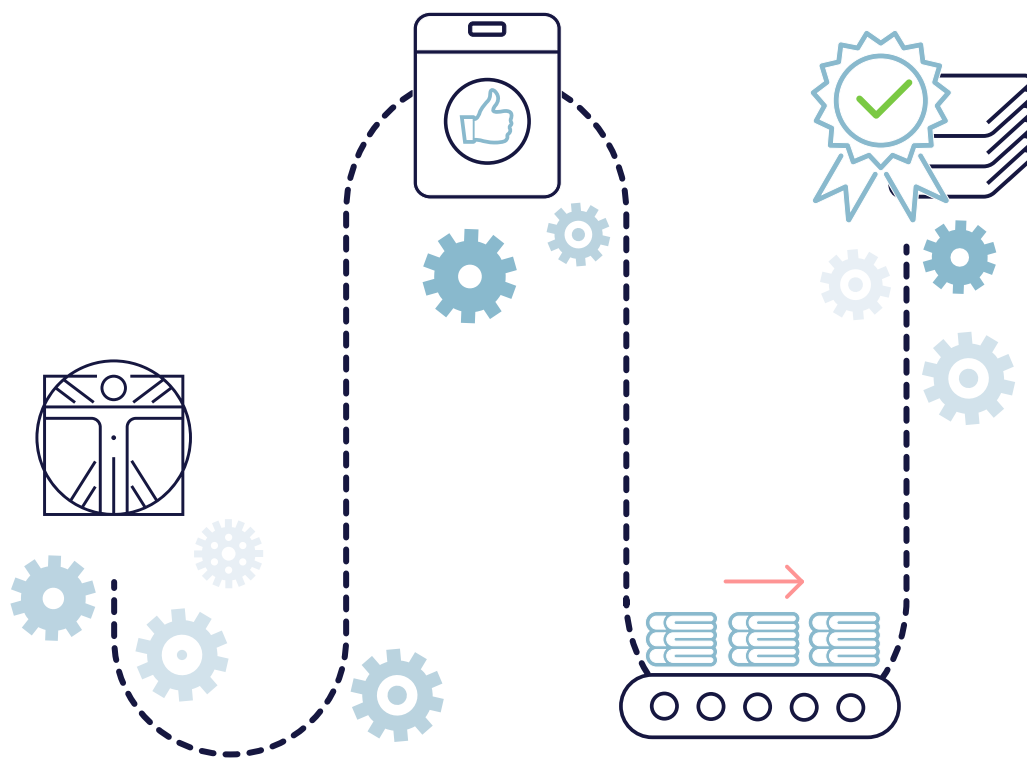


Outstanding productivity

The laundry business is hugely time-intensive. Faster equipment means you can handle more loads of laundry in a day: **the easiest way to make your business more productive.**

Washers designed so thoughtfully that every step is easy

Imagine never having to wonder what buttons to press to select a program or add the right amount of chemicals. Load after load, you'll save time on these tasks, and enjoy a **stress-free experience** thanks to our ergonomic improvements. Extreme user friendliness and reduced strain add up to a **more productive business** all around: just press a button for **consistently excellent results**.



Exceptional design

Ergonomic improvements and an intuitive interface



Easy to use

Less strain, obvious choices



Effortless process

Get it right the first time!



Do more & better in less time

The goal of every successful business



Real-time
solutions

Elect
PROFES
O

A world of digital solutions that **simplify your work and help your business develop.** Benefit from a growing range of services, designed just for you.

The OnE effect

A unique partner. A world of benefits.

Electrolux Professional **OnE** is your digital partner that helps you to optimize your laundry operation. **OnE** guides you through your day enabling you to make the right decision every time. Whether you are an owner, manager, operator, or technician, **OnE** helps you to get top performance from your Electrolux Professional solutions. This will maximize your revenue and accelerate your return on investment.

Electrolux
PROFESSIONAL
OnE



Improve your work-life

Electrolux Professional **OnE** gives you remote control over your operations. This saves you time to focus on the essentials of your business.



Maximize profit

Electrolux Professional **OnE** helps you reduce consumption to a minimum and optimize the efficiency of your business. This in turn will maximize your profits.



Boost your performance

Electrolux Professional **OnE** gives you the insight to better organize your production flow, and so improve your productivity and output quality and meet the highest quality standards.



Increase uptime of your equipment

Electrolux Professional **OnE** helps you plan maintenance at just the right time, to ensure maximum uptime while reducing your costs for unexpected breakdowns.



Essentia Teamed to serve you. Anytime, anywhere

Essentia is **the heart of superior Customer Care**, a dedicated service that ensures your competitive advantage. Provides you with the support you need and takes care of your processes with a **reliable service network**, a range of tailor-made exclusive services and innovative technology.

You can count on more than **2,200 authorized service partners**, **10,000 service engineers** in more than **149 countries**, and over **170,000 managed spare parts**.

Service network, always available

We stand ready and committed to support you with a **unique service network** that makes **your work-life easier**.

Keep your equipment performing

Undertaking correct maintenance in **accordance with Electrolux Professional Manuals** and recommendations is essential to avoid unexpected issues. **Electrolux Professional Customer Care** offers a number of **tailor-made service packages**. For more information contact your preferred **Electrolux Professional Authorized Service Partner**.

Service agreements you can trust

You can choose from **flexible tailor-made service packages**, according to your business needs, offering a variety of maintenance and support services.



Watch
the video
and find out
more!



Accessories & Consumables: your added value

Simplify your work and help your equipment last longer with **original Accessories & Consumables**. Dispatched quickly after rigorous testing by Electrolux Professional experts to ensure **best-in-class performance, profitability and user safety**.

Keep your laundry moving!

A wide range of accessories allows efficiency and best ergonomics

- ▶ The right trolleys and racks **facilitate the handling** of the laundry and help to prevent repetitive strain injuries.
- ▶ **Ergonomic laundry trolleys and racks** are suitable for commercial laundries, hospitals, nursing homes, hotels, spas, etc. Their design ensures that the trolley will come close to the equipment so that the laundry does not end up on the floor.
- ▶ Carts can be used for **the storage and in-house transport** of lightweight items such as shirts and other garments, terry cloth, bed linen and blankets.



Code	Description
0W1XFY	Canvas Trolley RV-74 - 200 lt
0W1Y2F	Stainless Steel Trolley BV-220 / BV-131lt
0W1Y2C	Bulk Transport Cart HV-52

Part number
0W1XX5 432730555
0W1Y2F 432730562
0W1Y2C 432730558



Watch the video and find out more!



lagoon® Advanced Care fast, easy and green

lagoon® Advanced Care in its Line 6000 version blends all the innovations of the new range, with the utmost **attention to textile cleaning quality and performance**, typical of the Electrolux Professional wet cleaning tradition. **New functionalities** will make your garments cleaning operation more profitable and easier to perform. The Woolmark Company endorsement certifies that your customers' garments will enjoy the best available service in the market.



Extreme **flexibility**, highest load factor per cycle, **lowest detergent consumption**, unmatched expertise in handling delicate textiles and garments.

Line 6000 Washers



WH6-7



WH6-8



WH6-11

Drum volume (l)	65	65	105
Dry weight capacity (kg/lb)	7/15	8/18	11/25
G-factor	450	450	450
Width (mm-in)	720 - 28 3/8"	720 - 28 3/8"	830 - 32 11/16"
Depth (mm-in)	721 - 28 3/8"	721 - 28 3/8"	757 - 29 13/16"
Height (mm-in)	1132 - 44 9/16"	1132 - 44 9/16"	1212 - 47 11/16"
Electric / steam / non-heated	●	●	●
Number of detergent pumps	15	15	15
Front loaded detergent box	-	-	-
ClarusVibe	●	●	●
Automatic Savings	●	●	●
Intelligent Dosing	●	●	●
Power Balance	●	●	●
Integrated Savings	○	○	○
lagoon® Advanced Care	-	-	-



WH6-14



WH6-20



WH6-27



WH6-33

Drum volume (l)	130	180	240	300
Dry weight capacity (kg/lb)	14/30	20/45	27/60	33/75
G-factor	450	450	450	450
Width (mm-in)	910 - 35 13/16"	970 - 38 3/16"	1020 - 40 3/16"	1020 - 40 3/16"
Depth (mm-in)	821 - 32 5/16"	947 - 37 5/16"	990 - 39"	1134 - 44 5/8"
Height (mm-in)	1340 - 52 3/4"	1426 - 56 1/8"	1462 - 57 9/16"	1462 - 57 9/16"
Electric / steam / non-heated	●	●	●	●
Number of detergent pumps	15	15	15	15
Front loaded detergent box	○	○	○	○
ClarusVibe	●	●	●	●
Automatic Savings	●	●	●	●
Intelligent Dosing	●	●	●	●
Power Balance	●	●	●	●
Integrated Savings	○	○	○	○
lagoon® Advanced Care	-	○	○	○

● STANDARD ○ OPTIONAL – NOT AVAILABLE



Excellence is central to everything we do. By anticipating our customers' needs, we strive for Excellence with our people, innovations, solutions and services. To be the OnE making our customers' work-life easier, more profitable – and truly sustainable every day.

Follow us on



professional.electrolux.com

Scan the cover to see Line 6000 in **augmented reality**



Excellence with the environment in mind

- ▶ All our factories are ISO 14001-certified
- ▶ All our solutions are designed for low consumption of water, energy, detergents and harmful emissions
- ▶ In recent years over 70% of our product features have been updated with the environmental needs of our customers in mind
- ▶ Our technology is RoHS and REACH compliant and over 95% recyclable
- ▶ Our products are 100% quality tested by experts

